

# A Wealth of Opportunities

Share outstanding	126.7 M
Options (\$0.10 - \$0.15)	6.5 M
Warrants (\$0.10 - \$0.20)	55.6 M
Fully diluted	188.9 M
Treasury	\$2.7 M

## Management & Board of Directors

**Michael (Mick) Stares**  
*President & CEO*

**Scott Jobin-Bevans**  
*Vice President Exploration, Director*

**Nikolaos (Nick) S. Tsimidis**  
*Chief Financial Officer*

**Elliot Strashin**  
*Chairman*

**Alexander (Sandy) Stares**  
*Director*

## Investment Highlights

White Metal Resources is a well-funded junior exploration company focused on the two flagship projects, Taranis Copper-Silver project in Namibia and Tower Mountain Gold project in Northern Ontario, Canada. The company also has a number of highly prospective exploration projects that are under JV contracts in both countries.

- Located 50 km Northwest of Thunder Bay city, the Tower Stock Gold project has great resemblance to the renowned Young-Davidson & Bettie Gold Deposit (host to appx. 90 Mt Gold in Measured, Indicated and Inferred categories). The Tower Stock project covers appx. 19.68 km<sup>2</sup>, consisting of multiple targeted zones, bearing an ample opportunity to build high-grade gold resources and making new discoveries at the Tower Stock project.
- Close Proximity to Excellent Infrastructure

The Taranis Copper-Silver project is located in the Located in the Kaoko Copper Belt the Tsumeb Mine, renamed the Ongopolo Mine produced about 30 million tons of ore yielding 1.7 Mt copper.

The Okohongo Copper-Silver Deposit, located within the Taranis project, is host to an NI 43-101 Mineral Resources of 7.7 Mt (Inferred) at 1.82% CuEq, providing incredible fundamentals for further exploration at the project.



- Exploration projects that are currently advanced by JV partners:

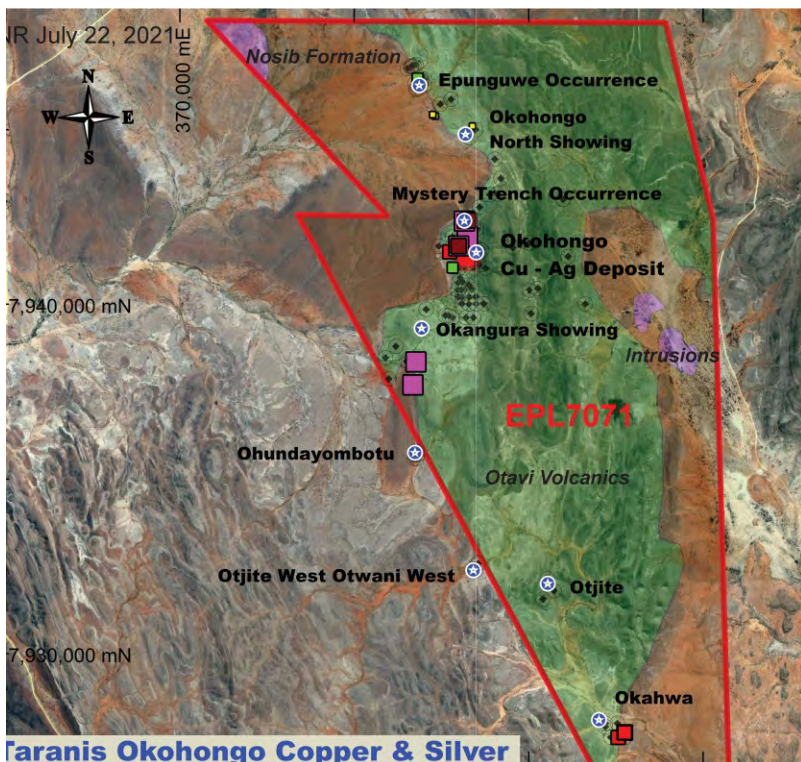
Far Lake Copper-Silver project, ON, Canada – Benton Resources (TSXV: BEX).

Startrek Gold project, NL, Canada – Leoco Gold Inc. (CSE: LECR)  
Dorwit Copper-Silver project, Namibia – Noronex (ASX: NRX).





# Exploration Updates on Flagship



## Taranis (Okohongo deposit) Copper-Silver Project, Namibia

- Following the completion of 3,226 m of Reverse Circulation drilling program, White Metal announced NI 43-101 Mineral Resources of 7.7 Mt (Inferred) at 1.82% CuEq.
- Summer prospecting program resulted in high-grade grab samples of 35.2% Cu and 548 g/t Ag, showing significant opportunity to expand the current deposit along strike.
- Received renewed exploration license, setting the new expiry date to June 12, 2023.

## Tower Mountain Gold Project ON, Canada

3,000 m drilling program commenced in July 2021, focused on the newly discovered Ellen Zone and several other highly prospective targets over possible greater than 2 km strike. New Discovery, Ellen Zone, a new high- to low-grade gold zone with 1.7 g/t Au over 82.5 m from 10 m, including 3.0 g/t Au over 45 m from 10 m and 59.9 g/t Au over 1.5 m from 16 m, further showing the property has great potential to host a significant gold deposit.

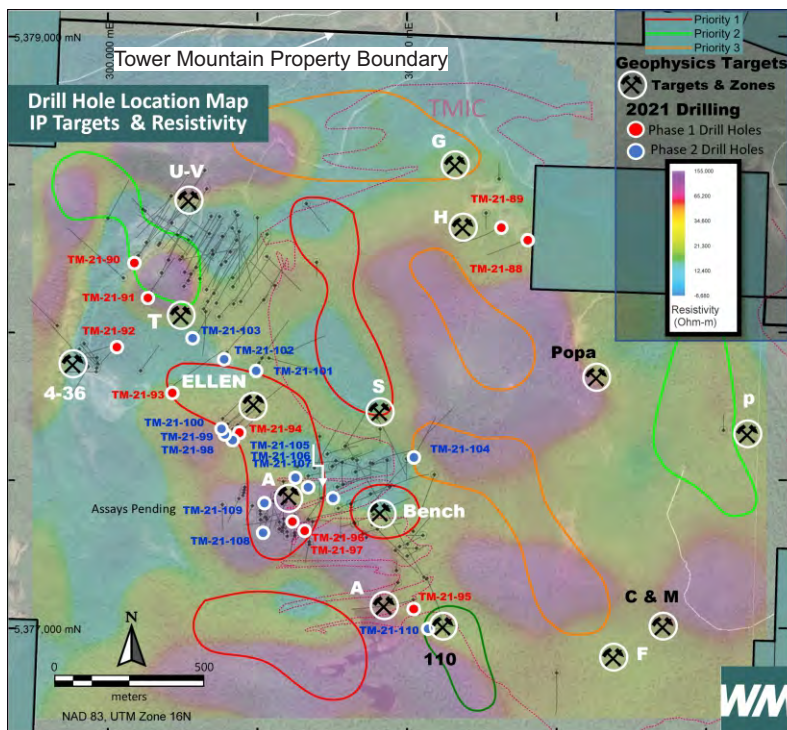
### Highlights

### Drilling

- A Zone: 3.94 g/t Au over 23.8 m (from 3.7 m).
- New drilling discovery 110 Zone: 0.44 g/t Au over 141.50 m including 1.02 g/t Au over 7.5 m.

### New Surface Discoveries

- Star Zone: 24 rock grab samples, taken over 450-m-long by 250-m-wide area, ranging from 8 ppb to 2.83 g/t Au, with 14 of the 24 samples assaying over 0.1 g/t Au.
- C & M Zone: two rock grab samples assayed 5.27 g/t and 2.33 g/t Au.
- Papa Zone: two rock grab samples, taken over a 10-square-metre area, assayed 3.05 g/t and 2.94 g/t Au.



## Contact Us

684 Squire Street,  
Thunder Bay,  
Ontario P7B 4A8  
T: +1 (807) 358-2420  
F: +1 (807) 475-7200

**Michael Stares** *President & CEO*  
T: +1-807-358-2420  
E: [starcon@tbaytel.net](mailto:starcon@tbaytel.net)

**Nancy Massicotte**  
*Investor Relations*  
T: +1 (604) 507-3377  
F: +1 (866) 503-3377  
E: [ir@whitemetalres.com](mailto:ir@whitemetalres.com)

**Thomas Do**  
*CHF Capital Markets*  
T: +1 (416) 868-1079 x230  
E: [thomas@chfir.com](mailto:thomas@chfir.com)